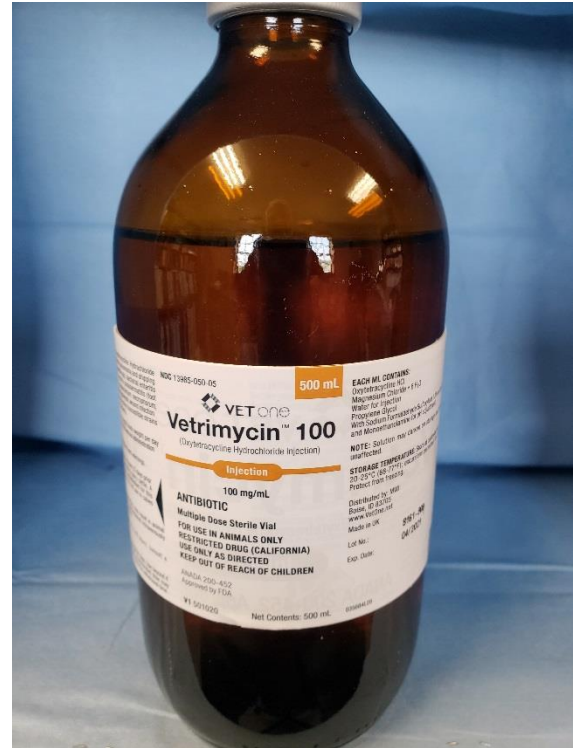


VETRIMYCIN 100

Indications: Disease due to oxytetracycline susceptible organisms. **Do not use in dairy female bovines over 20 months of age.**



Dosage: 5ml/100lbs body weight once a day for 4 days

Route of Administration: IV, IM

Withholding: Milk: **Do not use in lactating cows.**

Meat: **22 days**

Contraindications: *none*

Storage Conditions: Room Temperature